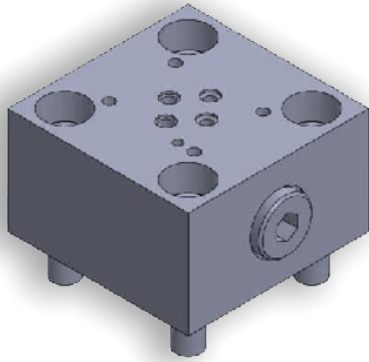


DESCRIPTION



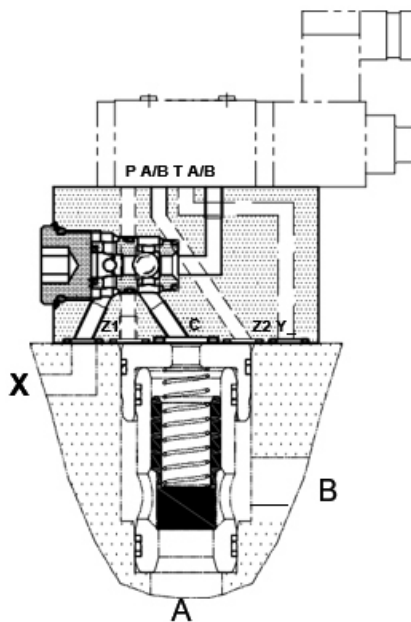
The Covers H9-LC*SDEAA and H9-LC*SDEAB are designed to hold Hydronine make 2 port slip-in cartridge valves in the cavities machined as per ISO 7368, with built in facility to control the operation of the cartridge valve as under,
Referring to the circuits shown below, the built-in Shuttle valve in the cover selects higher of the pilot pressures brought to the cover at its ports X and from either A (in case of cover model H9-LC*SDEAA) or B (in case of cover model H9-LC*SDEAB) to the control port C of the cartridge valve.

Thus, these configurations are very convenient in cartridge circuits when one wishes to use a Cartridge valve as a solenoid controlled leakage-free gate (leakage-free in the direction of the cartridge from port B to port A). This can be achieved by connecting control port X to port B of the cartridge in manifold.

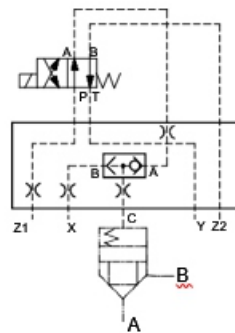
If done so, by using the cover model H9-LC*SDEAA, with solenoid in de-energized condition, one can achieve a function of free flow with check from its port A to port B. By energizing the solenoid, the passage in the cartridge (from port A to B or B to A) can be blocked.

By using the cover model H9-LC*SDEAB, with solenoid de-energizes condition, one can block the passage in the cartridge (from port A to B or B to A). By energizing the solenoid, free flow with check from its port A to port B can be achieved.

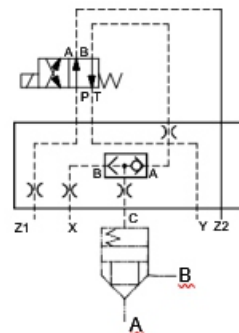
SECTION



HYDRAULIC SYMBOL



H9-LC*SDEAA

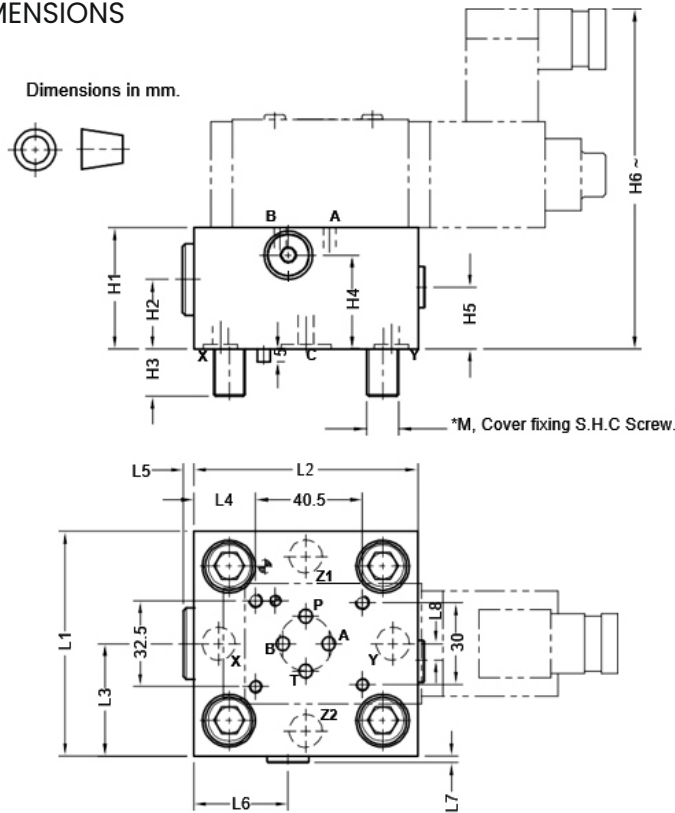


H9-LC*SDEAB

TECHNICAL SPECIFICATIONS

| | |
|----------------------------|--------------------------------|
| Mounting interface | : As per ISO 7368 |
| Working pressure | : 350 bar. |
| Hydraulic medium | : Mineral oil. |
| Temperature range | : -20°C to + 80°C. |
| Viscosity range | : 10 cSt to 380 cSt. |
| Fluid cleanliness required | : ISO 4406 20/18/15 or better. |

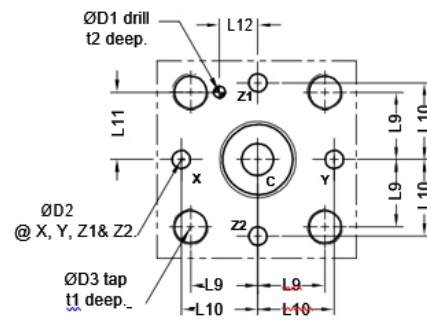
UNIT DIMENSIONS



Notes:

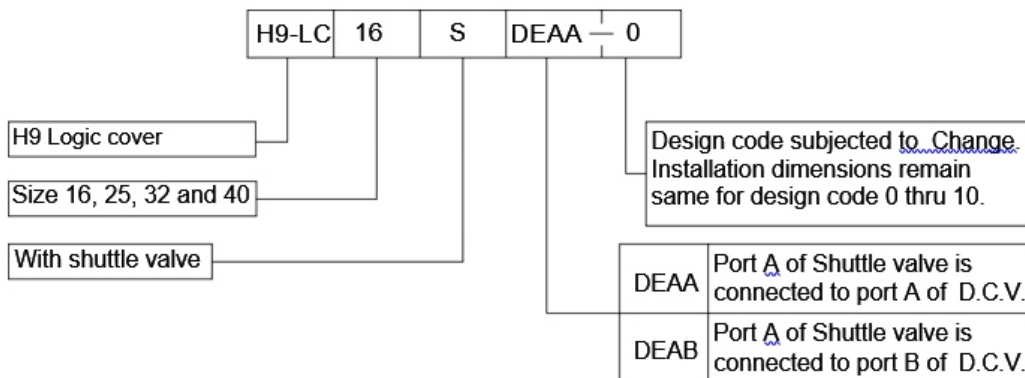
- Cover fixing S.H.C Screws are **OUT OF SCOPE OF SUPPLY.**
- Mounting interface for Soln. D.C.V as per ISO 4401-03-02.

Cover mounting interface as per ISO 7368.



| Size | Mass Kg. approx | L1 | L2 | L3 | L4 | L5 | L6 | L7 | L8 | L9 | L10 | L11 | L12 | ØD1 | ØD2 max | ØD3 | t1 | t2 | H1 | H2 | H3 | H4 | H5 | H6 | *M. 4 nos. Cover fixing S.H.C. Screw (Class 12.9) | Tightening Torque. |
|------|-----------------|-----|-----|------|------|----|-----|-----|-----|------|-----|------|------|-----|---------|-----|----|----|----|----|----|------|-----|-----|---|--------------------|
| 16 | 2.3 | 65 | 75 | 32.5 | 26.2 | 4 | --- | --- | --- | 23 | 25 | 23 | 10.5 | 4 | 4 | M8 | 14 | 10 | 53 | 25 | 12 | --- | --- | 158 | M8 x 40 Long | 39 Nm |
| 25 | 3.0 | 85 | 85 | 42.5 | 23.5 | 4 | --- | --- | --- | 29 | 33 | 29 | 16 | 6 | 6 | M12 | 20 | 10 | 50 | 25 | 18 | --- | --- | 150 | M12 x 45 Long | 135 Nm |
| 32 | 4.7 | 102 | 102 | 51 | 32 | 0 | 43 | 3 | 8 | 35 | 41 | 35 | 17 | 6 | 8 | M16 | 26 | 10 | 55 | 31 | 24 | 42.5 | 28 | 160 | M16 x 55 Long | 330 Nm |
| 40 | 7.5 | 125 | 125 | 62.5 | 43.5 | 0 | 54 | 3 | --- | 42.5 | 50 | 42.5 | 23 | 6 | 10 | M20 | 33 | 10 | 60 | 35 | 30 | 48 | --- | 165 | M20 x 70 Long | 650 Nm |

ORDERING COAD



Notes: Solenoid (refer spool type) to be ordered separately.

