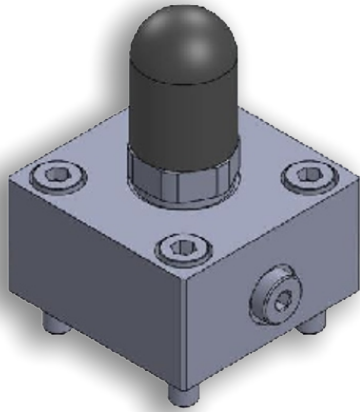


DESCRIPTION



The Covers H9-LC*SDEAA and H9-LC*SDEAB are designed to hold Hydronine make 2 port slip-in cartridge valves in the cavities machined as per ISO 7368, with built in facility to control the operation of the cartridge valve as under,

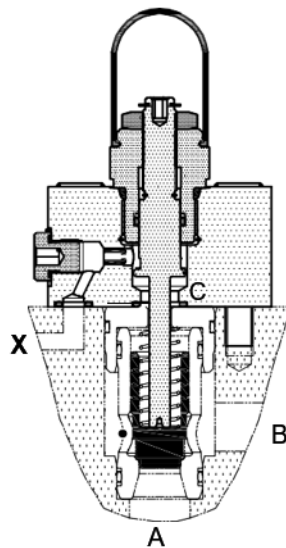
Referring to the circuits shown below, the built-in Shuttle valve in the cover selects higher of the pilot pressures brought to the cover at its ports X and from either A (in case of cover model H9-LC*SDEAA) or B (in case of cover model H9-LC*SDEAB) to the control port C of the cartridge valve.

Thus, these configurations are very convenient in cartridge circuits when one wishes to use a Cartridge valve as a solenoid controlled leakage-free gate (leakage-free in the direction of the cartridge from port B to port A). This can be achieved by connecting control port X to port B of the cartridge in manifold.

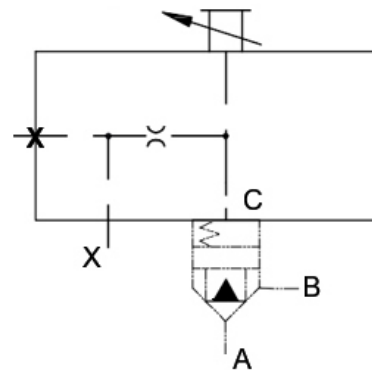
If done so, by using the cover model H9-LC*SDEAA, with solenoid in de-energized condition, one can achieve a function of free flow with check from its port A to port B. By energizing the solenoid, the passage in the cartridge (from port A to B or B to A) can be blocked.

By using the cover model H9-LC*SDEAB, with solenoid de-energizes condition, one can block the passage in the cartridge (from port A to B or B to A). By energizing the solenoid, free flow with check from its port A to port B can be achieved.

SECTION



HYDRAULIC SYMBOL

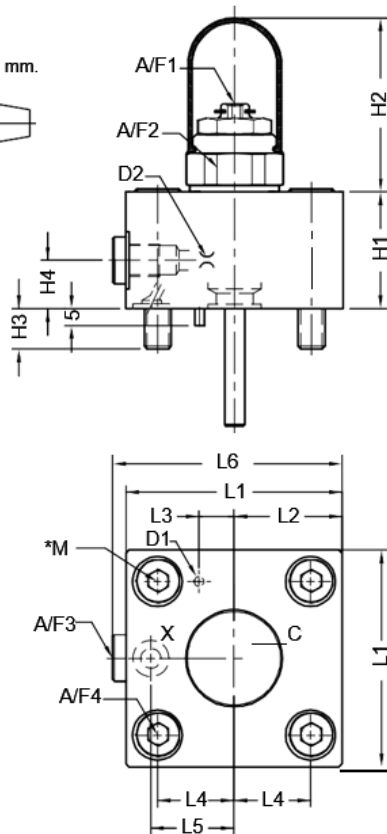


TECHNICAL SPECIFICATIONS

Function	:	To provide adjustable stroke limiting facility to the poppet of the cartridge valves for controlling the flow by throttling.
Mounting interface	:	As per ISO 7368
Hydraulic medium	:	Mineral oil.
Temperature range	:	-20 to + 80°C.
Viscosity range	:	10 cSt to 380 cSt.
Fluid cleanliness required	:	ISO 4406 20/18/15 or better.

UNIT DIMENSIONS

Dimensions in mm.



Notes:

Mounting interface for Cover as per ISO 7368, for dimensional details and engineering data refer Cartridge valve data sheet D03426

*Cover fixing S.H.C Screws are **OUT OF SCOPE OF SUPPLY.**

Size	Mass Kg. apprx	L1	L2	L3	L4	L5	L6	D1	D2	H1	H2	H3	H4	A/F1	A/F2	A/F3	A/F4	*M. 4 nos. Cover fixing S.H.C. Screw (Class12.9)	Tightening Torque.
16	1.2	65	32.5	10.5	23	25	69	3	1	35	52	12	14.5	4	27	5	6	M8 x 40 Long	39 Nm
25	2.3	85	42.5	16	29	33	89	5	1	40	52	18	19	4	27	6	10	M12 x 45 Long	135 Nm
32	4.2	102	51	17	35	41	106	5	1.2	50	66	24	20	8	41	6	14	M16 x 55 Long	330 Nm
40	7.7	125	62.5	23	42.5	50	130	5	1.2	60	66	30	25	8	41	10	17	M20 x 70 Long	650 Nm

ORDERING COAD

