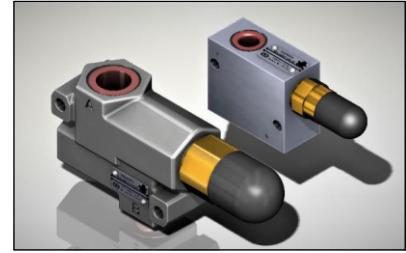
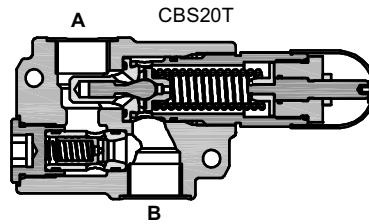
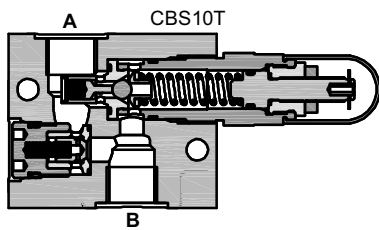


Description

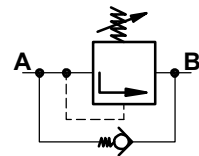
Counter balance valves CBS*T* are seat type valves. They offer free flow from their port B to Port A and give leak free closure in opposite direction upto a predetermined cracking pressure. The predetermined cracking pressure can be adjusted within its maximum specified range.



Section



Hydraulic symbol



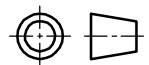
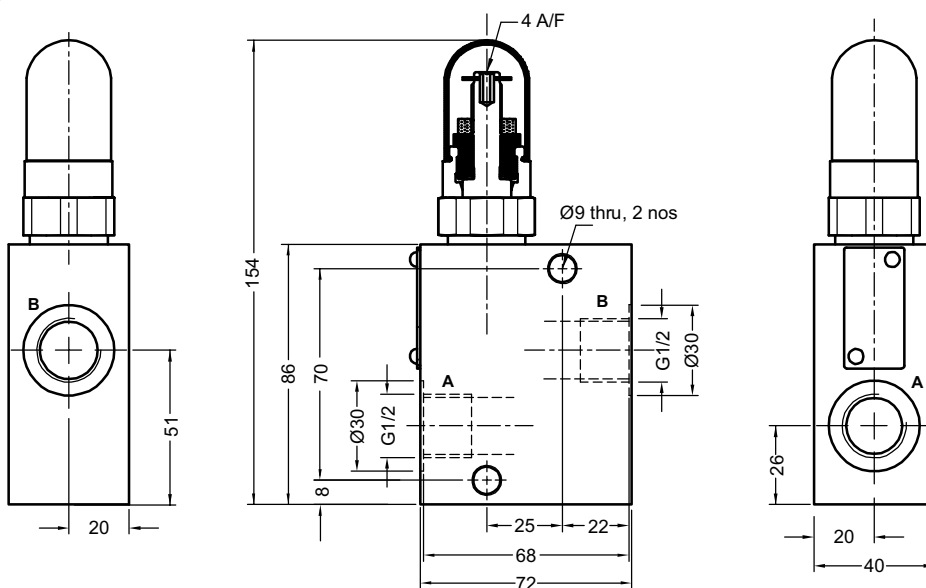
Technical specifications

Construction	:	Direct acting , Seat type, Internally pilot operated.		
Mounting style	:	Threaded port body		
Flow direction	:	Free flow from B to A		
	:	Piloted flow in opposite direction.		
Cracking pressure	:	Refer ordering code.		
Working pressure	:	315 bar for all Ports.		
Hydraulic medium	:	Mineral oil.		
Temperature range	:	-20°C to + 80°C.		
Viscosity range	:	10 cSt to 380 cSt.		
Fluid cleanliness required	:	ISO 4406 20/18/15 or better.		
Max. flow handling capacity	:	Model	CBS10T	CBS20T
		in l/min.	30	115
Mass approx.	:	Model	CBS10T	CBS20T
		in Kg.	0.9	4.0

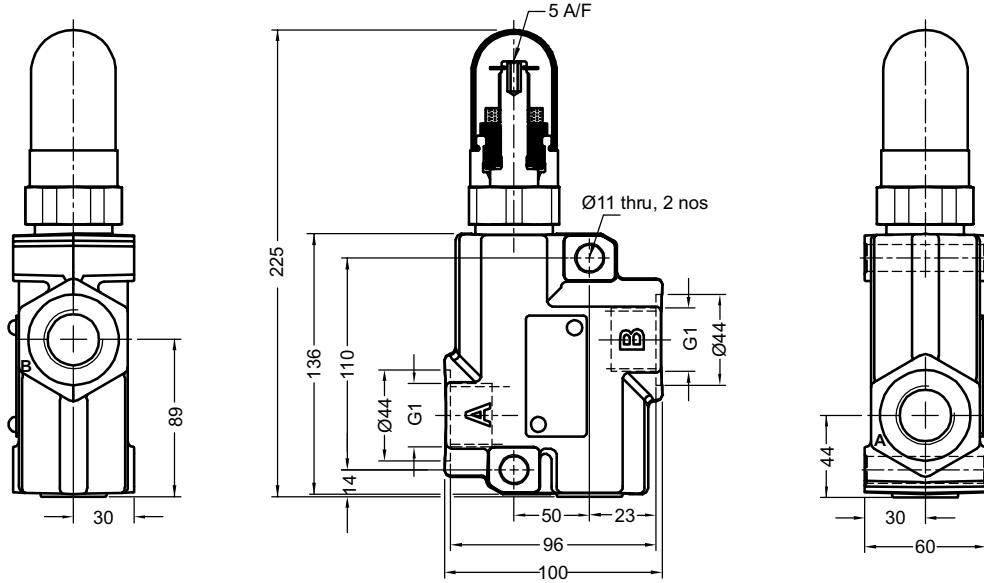
Unit dimensions

Model : CBS10T

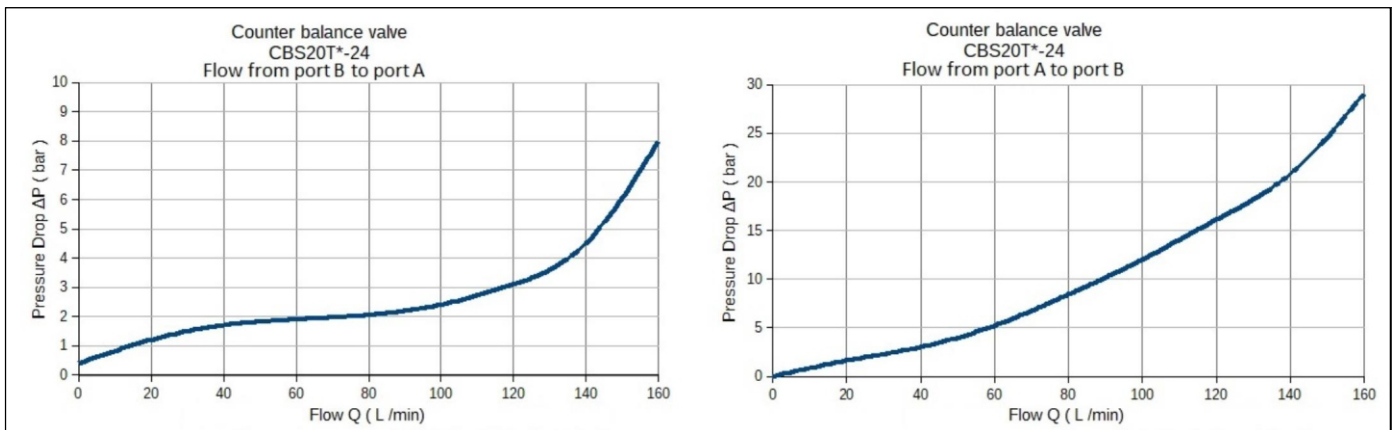
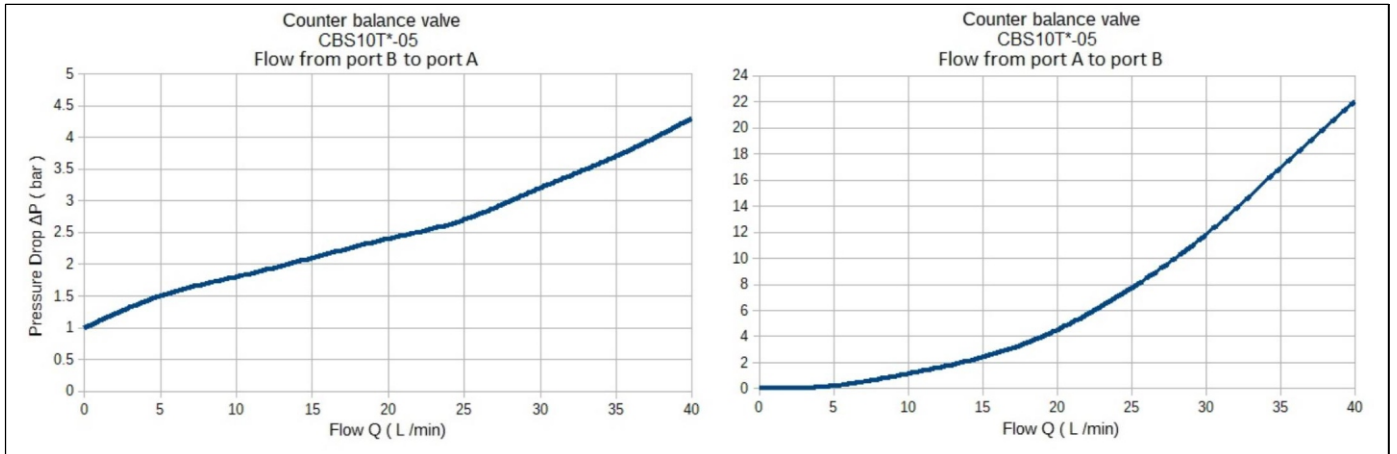
Dimensions in mm.

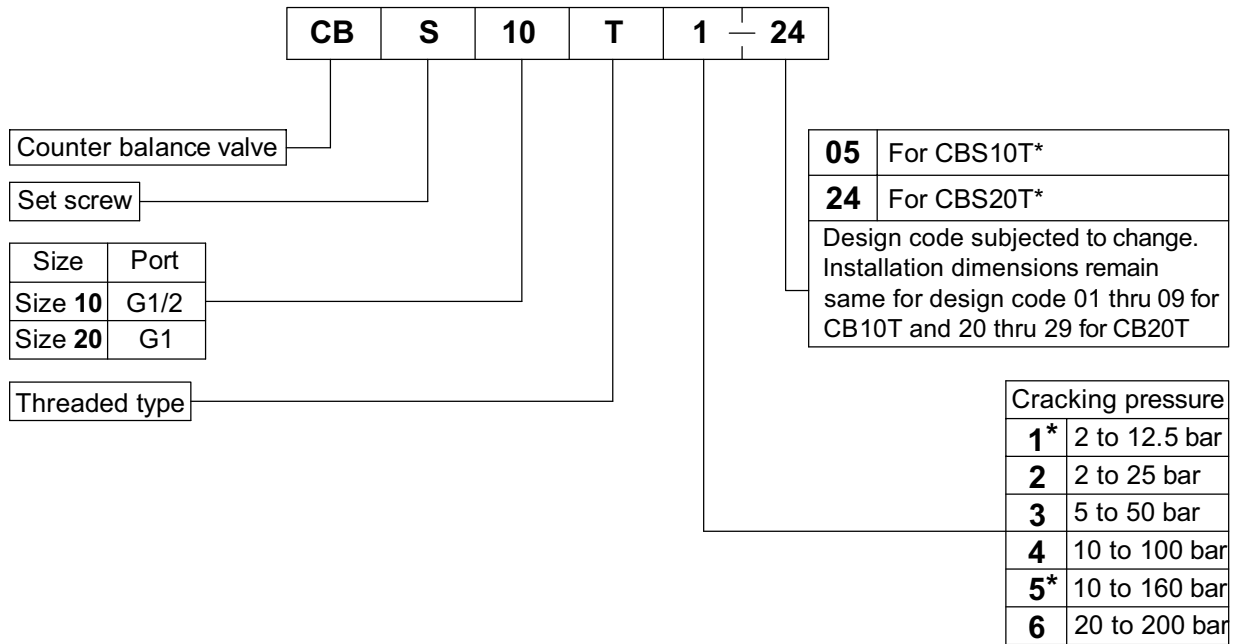


Model : CBS20T



Performance graph





Note : Cracking pressure marked with * are not available in CBS20T

All rights reserved.
Subject to change without prior notice.
Due to continuous improvement in the design of the product, the actual product supplied may look different than shown above.
For critical applications, please ask for certified installation drawing.