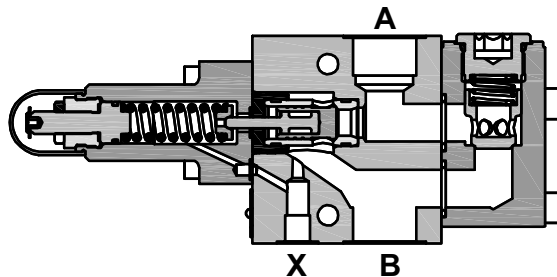
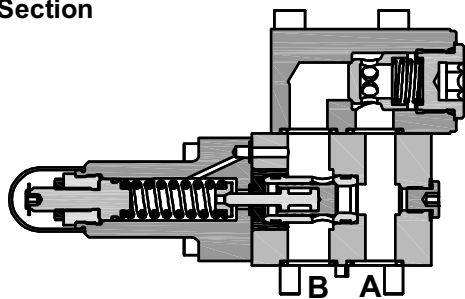


Description

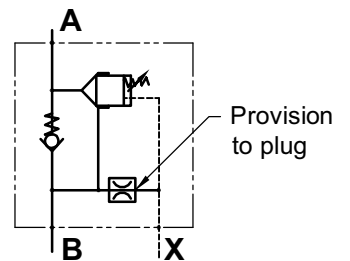
Counter balance valves CBS20*** are seat type valves. These offer free flow from port B to Port A and give leak free closure in opposite direction upto a predetermined cracking pressure. The predetermined cracking pressure can be adjusted within its maximum specified range. For higher cracking pressure or external leakage drain, Port X can be used.



Section



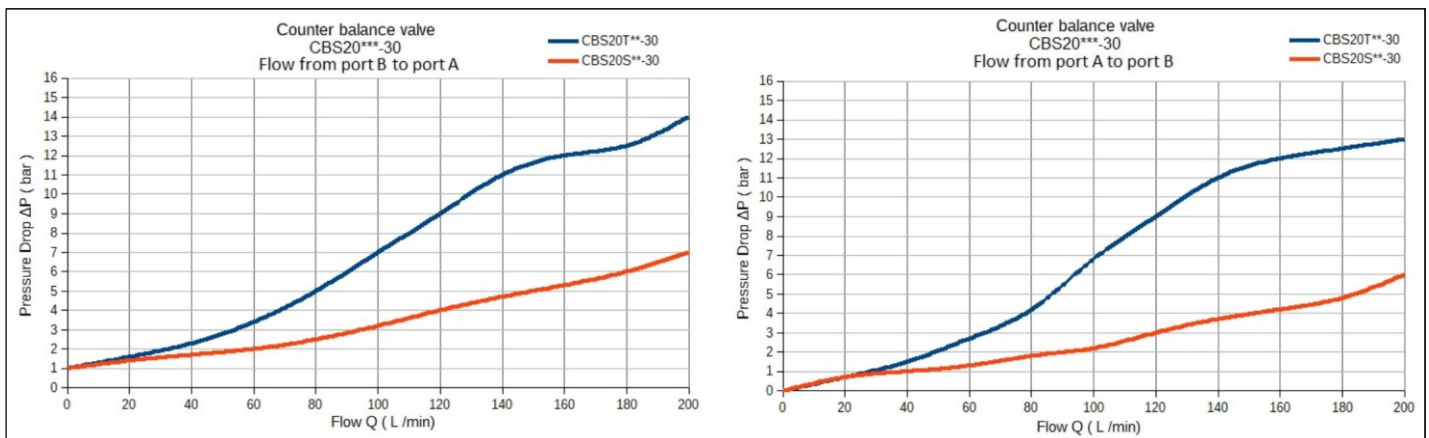
Hydraulic symbol



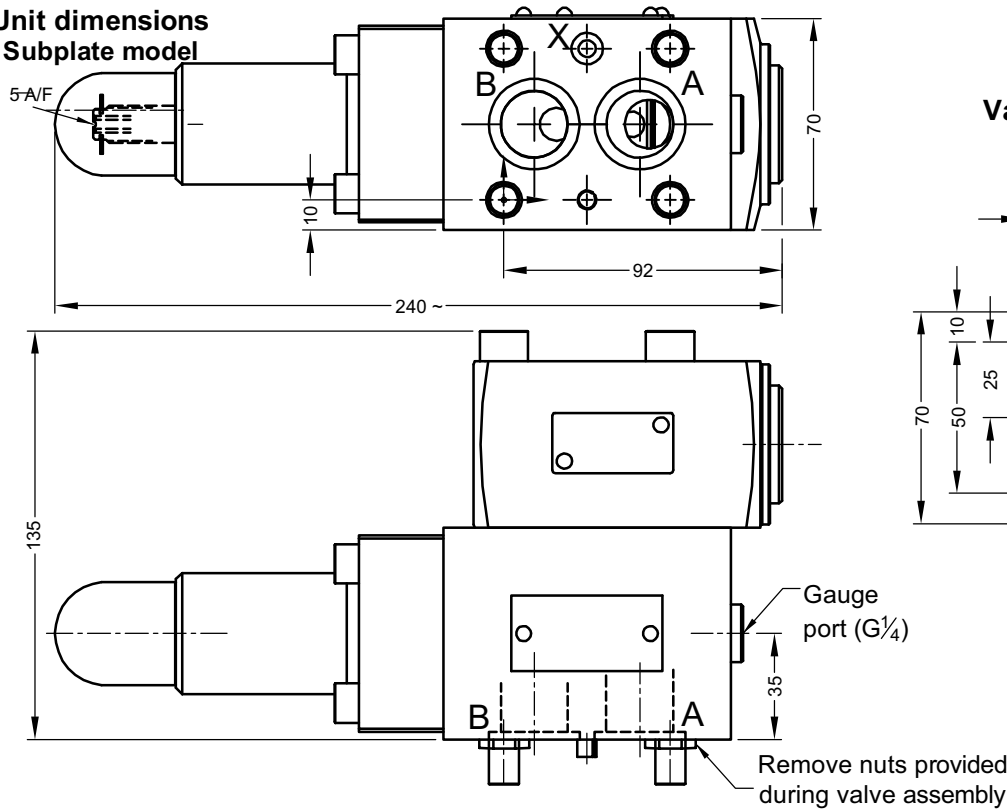
Technical specifications

Construction	:	Direct acting , Seat type.
Mounting style	:	Threaded port body and subplate body
Flow direction	:	Free flow from B to A
	:	Counter balance function from port A to B.
Cracking pressure	:	Refer ordering code.
Working pressure	:	315 bar for all Ports.
Hydraulic medium	:	Mineral oil.
Temperature range	:	-20°C to + 80°C.
Viscosity range	:	10 cSt to 380 cSt.
Fluid cleanliness required	:	ISO 4406 20/18/15 or better.
Max. flow handling capacity	:	200 l/min max.
Mass approx.	:	Model CBS20T CBS20S
		in Kg. 8.6 6.9

Performance graph

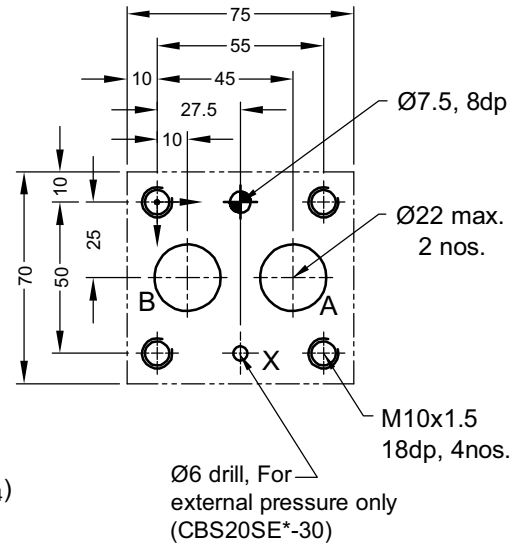


**Unit dimensions
Subplate model**

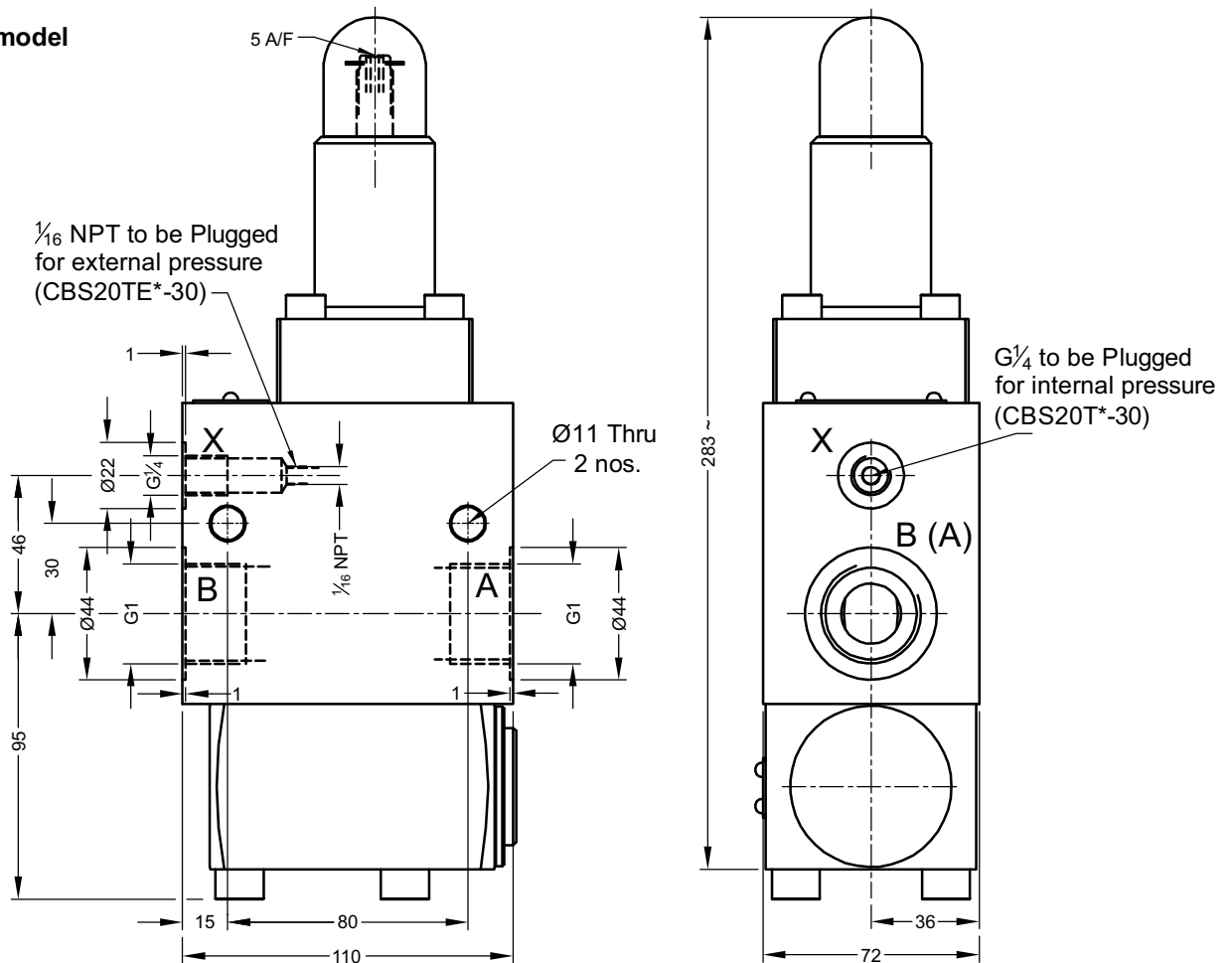


Dimensions in mm.

Valve mounting interface



Threaded model



Ordering code

CB S 20 T E 3.2 — 30

Counter balance valve

Set screw

Size **20**

Threaded type **T**

Subplate type **S**

Design code subjected to Change .
installation dimensions remain
same for design code 30 thru 39.

Cracking pressure (bar)

3.2, 6.3, 12.5, 25, 40 & 50

Skip if not required.

E External pressure setting or
Leakage drain.

All rights reserved.

Subject to change without prior notice.

Due to continuous improvement in the design of the product, the actual product supplied may look different than shown above.

For critical applications, please ask for certified installation drawing.