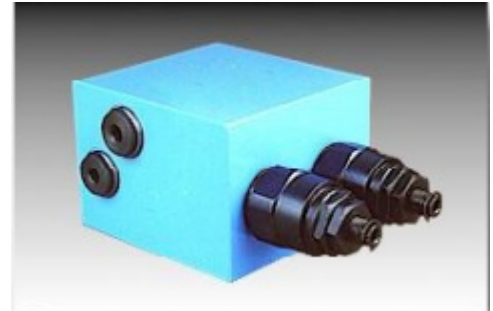


## Description

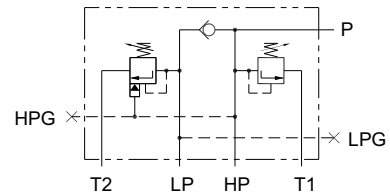
Designed to control double pumps of a Hi-Low system.  
Unloads low pressure pump when system pressure rises above the pressure set on unloader valve.  
Relieves high pressure pump when system pressure reaches the value.



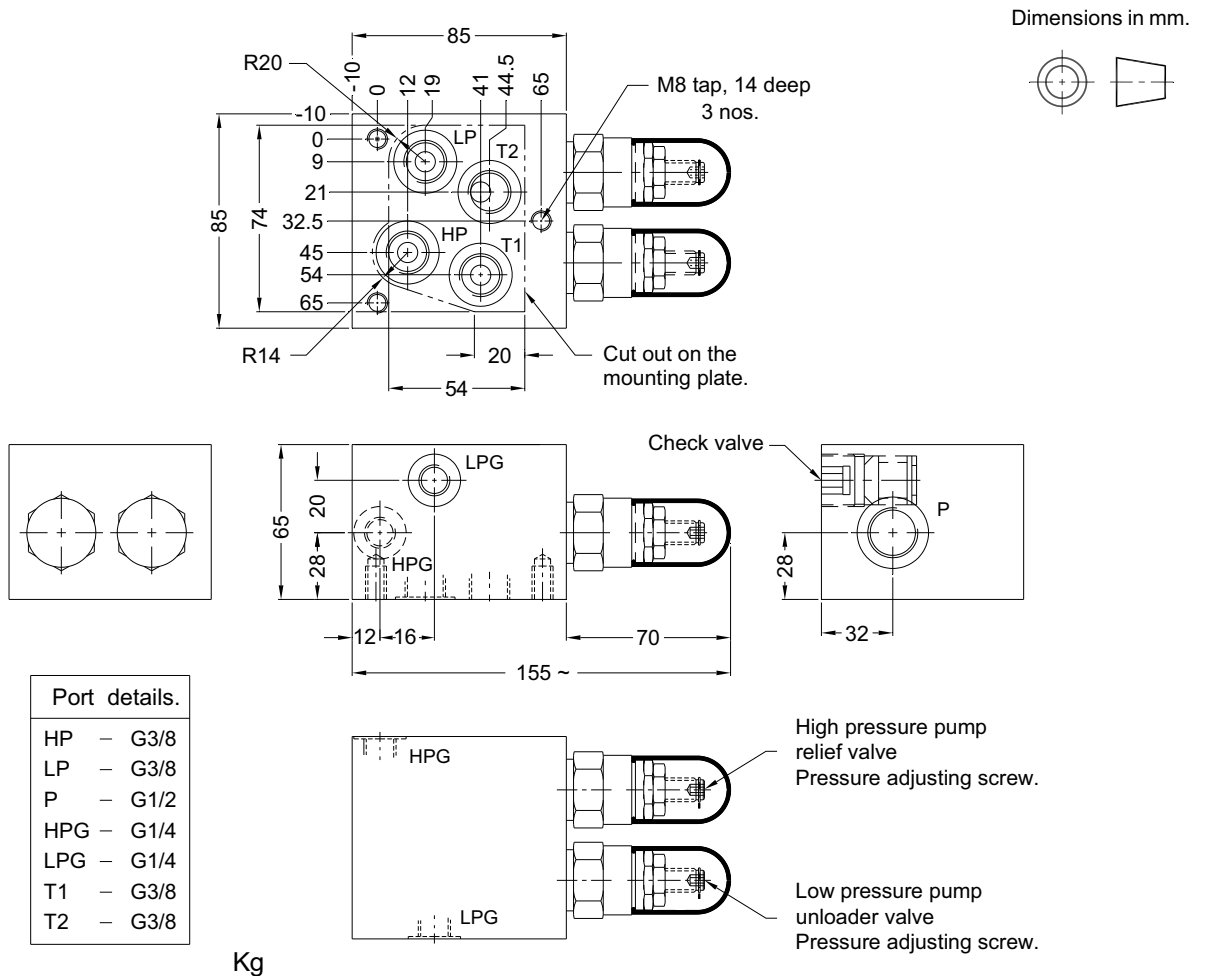
### Connection details.

- P ..... Out let connection.
- LPG .... Gauge connection on low pressure pump line.
- HPG .... Gauge connection on high pressure pump line.
- HP ..... High pressure pump connection.
- T1 ..... Tank connection high pressure.
- LP ..... Low pressure pump connection.
- T2 ..... Tank connection low pressure.

### Hydraulic Symbol



## Unit dimensions



### Technical specifications

| Construction.....                   | Direct acting poppet type high pr. relief valve.<br>Direct acting spool type low pr. unloading valve.   |                   |                    |                   |           |           |          |
|-------------------------------------|---|-------------------|--------------------|-------------------|-----------|-----------|----------|
| Mounting .....                      | Threaded body ( Factory standard )  |                   |                    |                   |           |           |          |
| Mounting position .....             | Optional  |                   |                    |                   |           |           |          |
| Direction of flow .....             | As per hydraulic symbol.  |                   |                    |                   |           |           |          |
| Operating pressure .....            | For low pr. pump port 100 bar max.<br>For high pr. pump port 100, 200 and 315 bar.  |                   |                    |                   |           |           |          |
| Hydraulic medium .....              | Mineral oil.  |                   |                    |                   |           |           |          |
| Viscosity range .....               | 10 cSt to 380 cSt.  |                   |                    |                   |           |           |          |
| Fluid temperature range .....       | -20°C to +70°C.   |                   |                    |                   |           |           |          |
| Fluid cleanliness requirement ..... | ISO 4406 20/18/15 or better.  |                   |                    |                   |           |           |          |
| Flow handling capacity .....        | <table border="1" data-bbox="614 909 1139 1028"> <thead> <tr> <th>Model</th> <th>High pressure max.</th> <th>Low pressure max.</th> </tr> </thead> <tbody> <tr> <td>PCM 06-06</td> <td>25 l/min.</td> <td>25 l/min</td> </tr> </tbody> </table> | Model             | High pressure max. | Low pressure max. | PCM 06-06 | 25 l/min. | 25 l/min |
| Model                               | High pressure max.  | Low pressure max. |                    |                   |           |           |          |
| PCM 06-06                           | 25 l/min.   | 25 l/min          |                    |                   |           |           |          |
| Mass .....                          | 1.75 kg APPROX.   |                   |                    |                   |           |           |          |

### Ordering code

